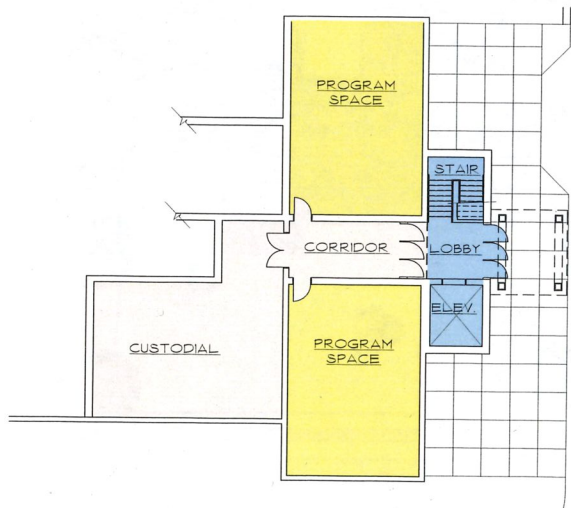
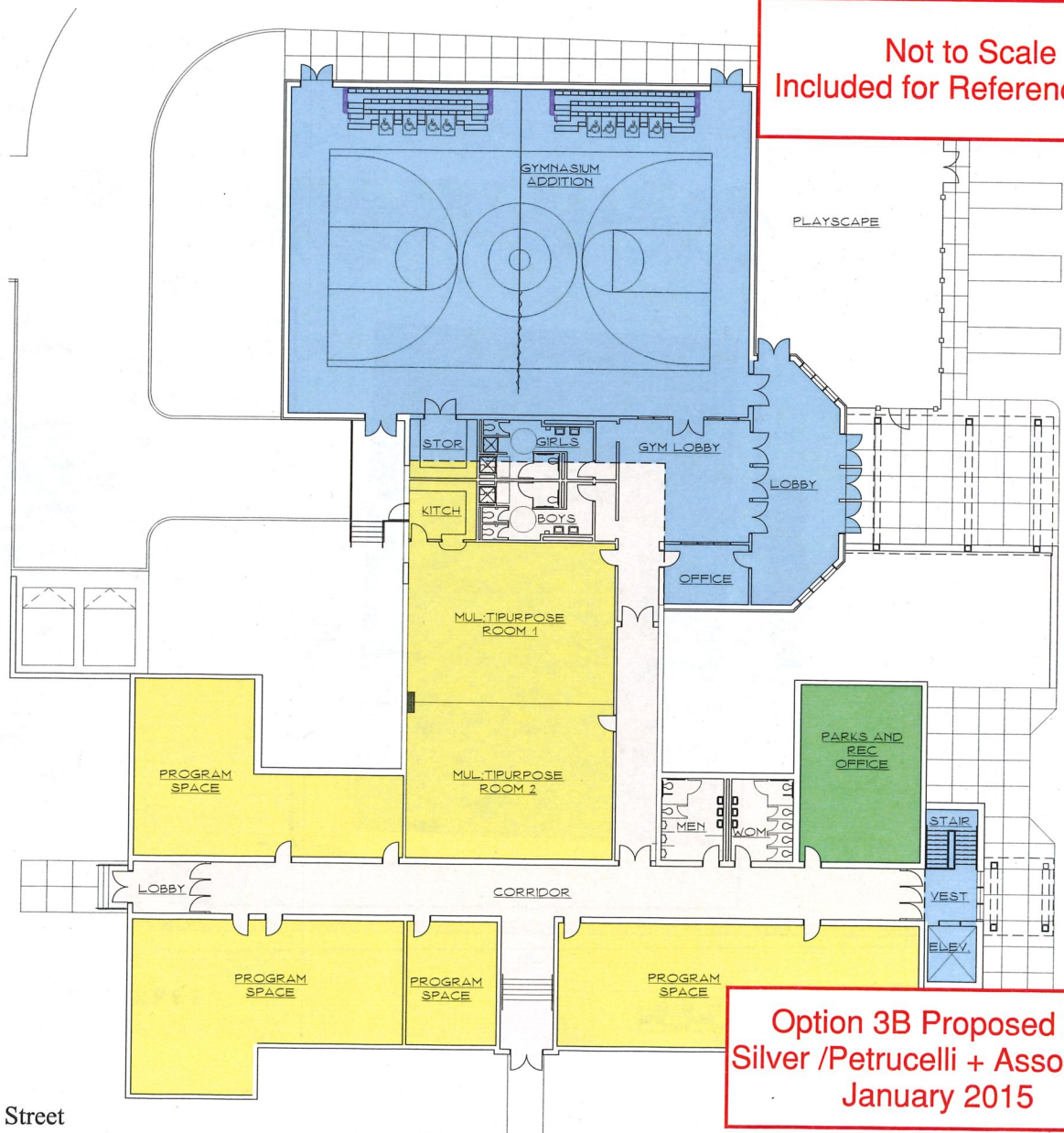


CIRCULATION AND CORE	4,900 sq. ft.
PROGRAM SPACE	9,280 sq. ft.
PARKS AND RECREATION	800 sq. ft.
ADDITION - GYMNASIUM	8,200 sq. ft.

LOWER LEVEL	3,215 sq. ft.
MAIN LEVEL	20,055 sq. ft.
TOTAL BUILDING NET	23,180 sq. ft.



LOWER LEVEL FLOOR PLAN



MAIN LEVEL FLOOR PLAN



Not to Scale
Included for Reference Only

Option 3B Proposed by
Silver /Petrucelli + Associates
January 2015



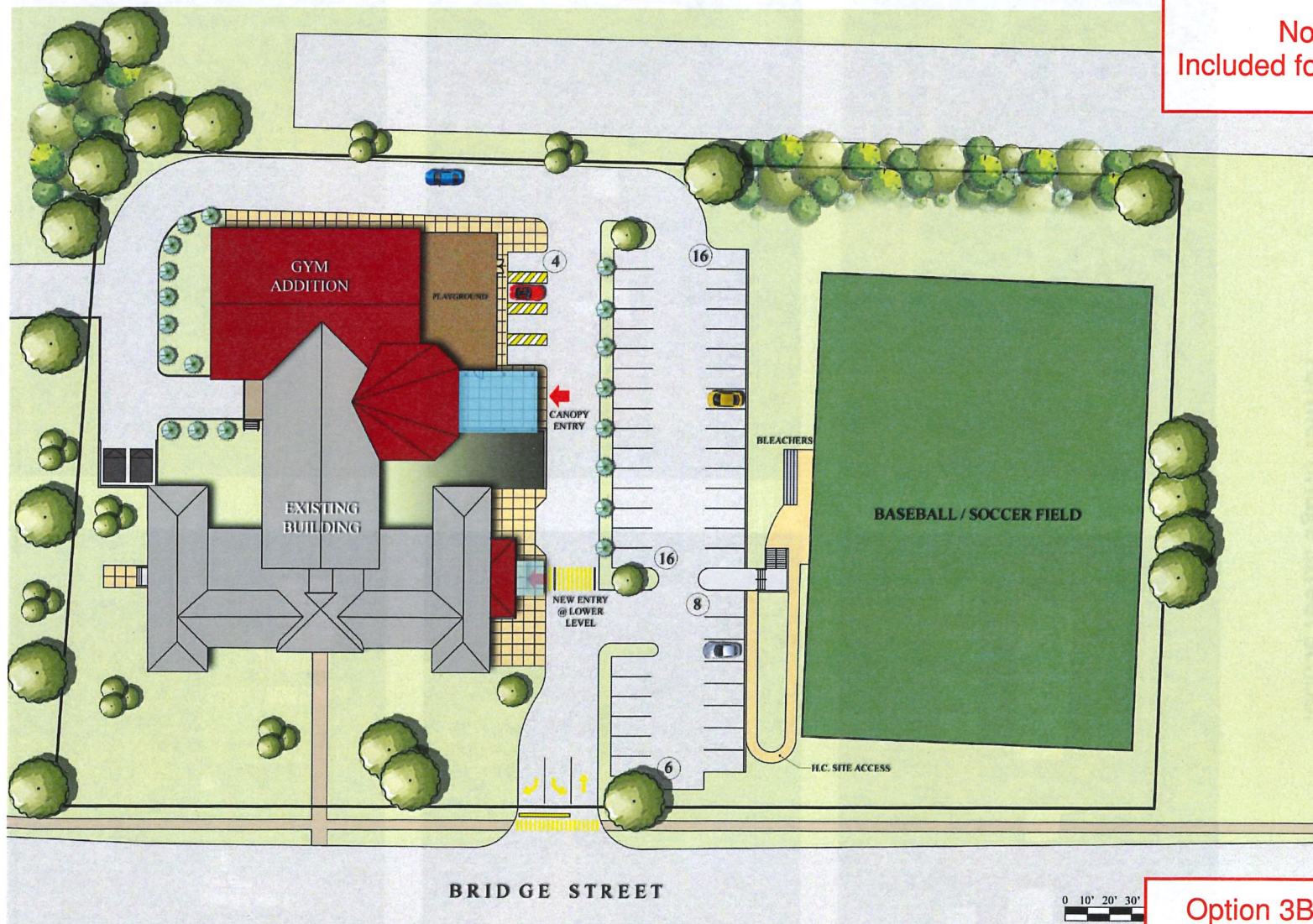
SILVER / PETRUCELLI + ASSOCIATES
Architects / Engineers / Interior Designers

Town of Suffield
Bridge Street School/Community Center Study - 90 Bridge Street

PROPERTY ACRES: 3.43
EXISTING SQUARE FOOTAGE: 14,970
PROPOSED SQUARE FOOTAGE: 23,180

PROPOSED OPTION 3B (GYMNASIUM AND VESTIBULE ADDITION)

Not to Scale
Included for Reference Only



Option 3B Proposed by
Silver /Petrucelli + Associates
January 2015

Town of Suffield
Bridge Street School/Community Center Study - 90 Bridge Street

PROPERTY ACRES: 3.43
EXISTING SQUARE FOOTAGE: 14,970
PROPOSED SQUARE FOOTAGE: 23,180

PROPOSED OPTION 3B (GYMNASIUM AND VESTIBULE ADDITION)

SITE PLAN



SILVER / PETRUCELLI + ASSOCIATES
Architects / Engineers / Interior Designers